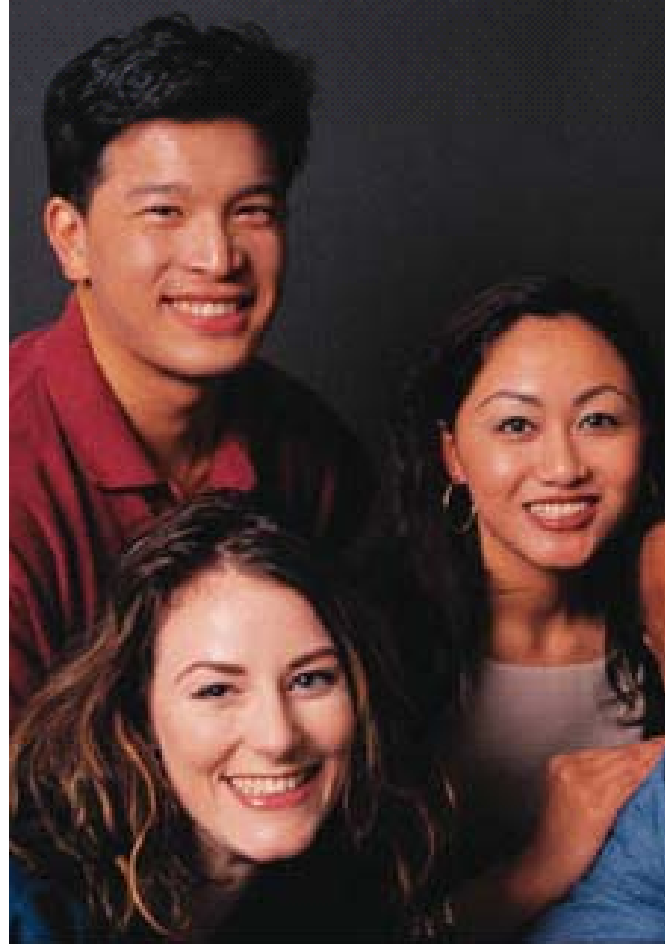


# English as a Second Language (ESL)

Lessons focus on daily living skills and effective communication in an English-speaking environment. The classes offer instruction in speaking, reading, writing, and listening skills to meet the immediate student needs. No registration or class fee. Student Body Card: \$2. Students can register in class at any time during the semester.

- Professional, credentialed, and experienced teacher
- No documentation required
- Daily Attendance of 25 students required or class may be closed.



**Open enrollment.  
Join at any time.**

**Classes Start September 13, 2010**

**Monday, Wednesday, Thursday - 12:15 pm - 2:15 pm**

**Tuesday - 11:20 am - 1:20 pm**

**Crescent Heights Elementary**

*1661 S. Crescent Heights Blvd., Los Angeles 90035*



**Questions? Call (323) 370-1040**

or go to our website at [westsideadultschool.org](http://westsideadultschool.org)

**Westside Community Adult School**

Division of Adult and Career Education • Los Angeles Unified School District